
Amaken ... Mobily Interactive Maps



Amaken Mobile Client

Symbian S60 User's Manual V1.0

Amaken from mobily draws your way and
puts the world at your finger tips

Powered by 

customer service: 056-010-1100 | www.mobily.com.sa



Welcome

Thank you for obtaining 'Amaken', the ultimate solution for mobile mapping and routing.

Always “one step ahead”

'Amaken' is the perfect tool for people on the move. You get access to countless information and a large number of features. Whether you are looking for the next restaurant, petrol station, hotel, etc. or your way through the city – you will find it with 'Amaken' easily.

No need for maps on paper anymore!

Covering the major cities, roads and points of interests (POI's) in Middle East (Saudi Arabia, Bahrain, Kuwait, Oman, Qatar, United Arab Emirates, Jordan and others), Europe, America, Africa, Asia and Australia.

Points of interest (e.g. restaurants, hotels, car-parks, petrol stations, etc.) are shown in the map.

'Amaken' means:

Features & Benefits

- Fully featured mapping
- Intelligent POI & address search
- Smart and fast routing with detailed route descriptions
- Latest map data (updated regularly)
- Position tracking with GPS
- Finding friends & determining own position
- High resolution Satellite images

Convenience & Simplicity

- The right city plan at hand – Easy to use and always in your pocket
- Comfortable menu-driven usage via the joystick (intuitive zooming & panning)

Efficiency & Flexibility

- Perfect orientation standby: wherever and whenever
- Information at your fingertips
- Bookmarks for favorite locations

Amaken from Mobily draws your way and puts the world at your finger tips.

Amaken Mobile Client Manual

Table of Contents

Welcome	1
1 Installation	4
2 Getting Started	5
3 Map Browsing	6
4 3D Map View	7
5 Offline Mode.....	8
6 Address Search.....	9
7 Search Nearby POIs	11
8 Bookmarks.....	13
9 Routing	15
10 Route Simulation	17
11 GPS Position Tracking	18
12 Location Based Services	19
13 Capturing a Map Image	21
14 Satellite View	22
15 Location Information	23
16 Application Settings	24
17 POI Display Options	26
18 Quick Reference	27
19 Installing Updates	28
Attachment A: POI Catch Phrases	29

1 Installation

For installing Amaken on your Smartphone, you can put the installation file anywhere on your computer. The installation file is called "Amaken.SIS" or something similar.

After you do so, you can transfer the data (installation file) from your computer to your Smartphone using Bluetooth, Infrared, USB Cable, Memory Card Reader or email.

Hint: Further, detailed information can be found in the instruction manual for either your computer or your Smart phone.

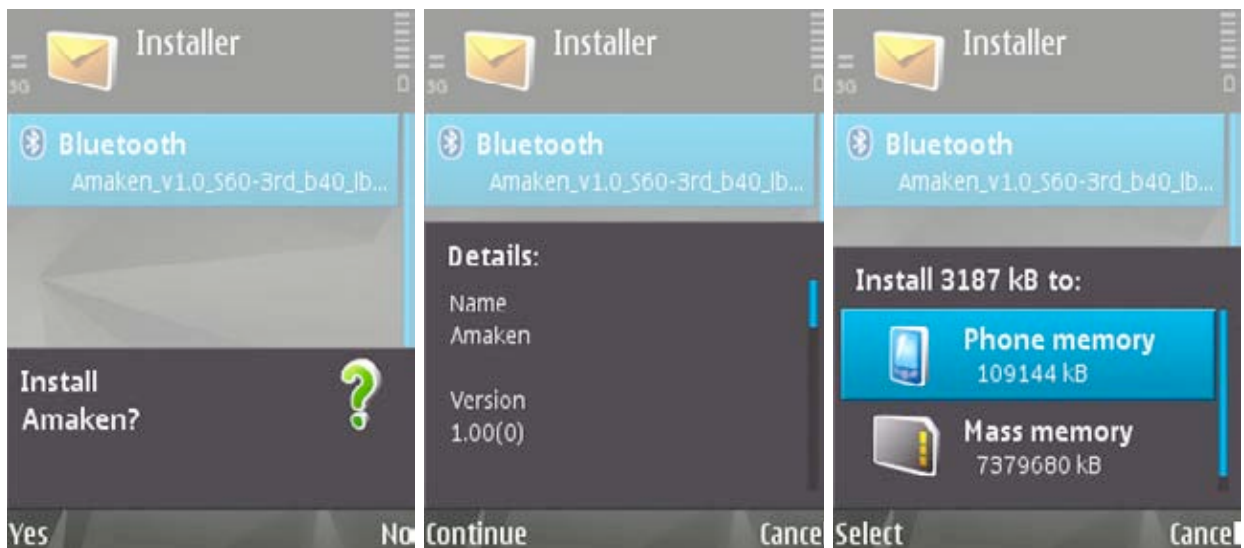
Opening the installation file on the cellular phone:

If you transferred the installation file to your Smartphone through Infrared connection or Bluetooth adapter, you can open the inbox to access the installation file (sis or six file).

If you received your installation file through email, you must call up the email that contains the information and open the attachment.

Hint: Further, detailed information can be found in the instruction manual for your Smartphone.

- Open the attachment and put it on your phone, independent of the email.
- The message "Data will be saved in installation" will appear on the display.
- Accessing the installation file will open the following menus:



Choose the storage location for the installation and confirm it by clicking "OK." The rest of the installation will finish automatically and will be confirmed with the message "Installation Complete".

2 Getting Started

To start *Amaken* perform the following steps:

1. Click on the Amaken icon shown on the desktop of your mobile device or in the applications folder. A start screen opens:



2. Press any key to continue.
3. When asked "Connect to Amaken?" - Select "Yes".



Your *Amaken Mobile Client* is now running and ready to use. Detailed usage descriptions for the *Amaken Mobile Client* are provided in the next chapters.

3 Map Browsing

Amaken allows you to easily navigate in the map.

You can pan the map view with the left, right, up, and down arrow keys. For example, the map pans to the left as long as you press the left arrow key.

For zooming the map view you can select multiple options in the "Move" menu:

- "Zoom In" (or press the "center" button) Zooms in the map view.

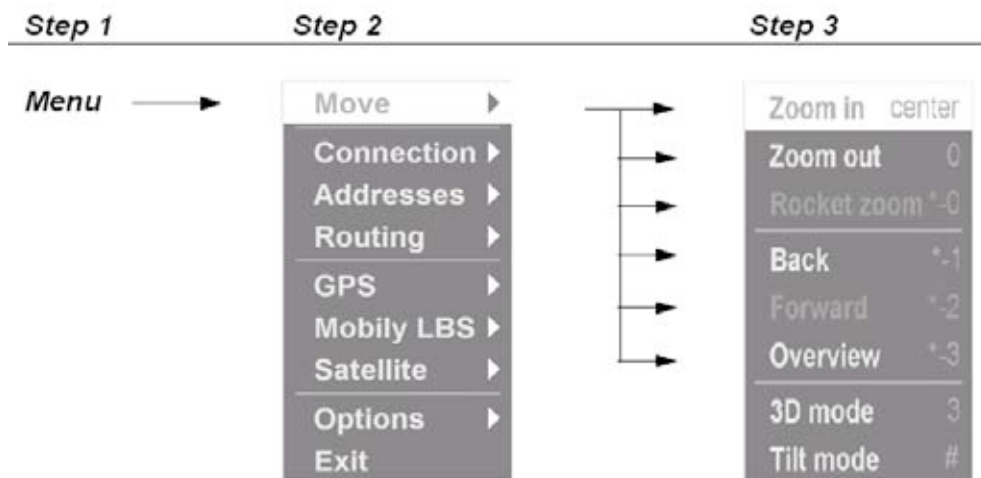
- "Zoom Out" (or press "0") Zooms out the map view.

- "Rocket Zoom" (or press "*" and then "0") Performs a rocket zoom. This feature provides a quick overview of the surrounding geographical area, and then retrieves the previous zoom level. This feature is only enabled when the map view is zoomed in enough.

- "Back" (or press "*" and then "1") Moves back in history (if a previous view exists).

- "Forward" (or press "*" and then "2") Moves forward in history (if a subsequent view exists).

- "Overview" (or press "*" and then "3") Zooms out the map view completely.



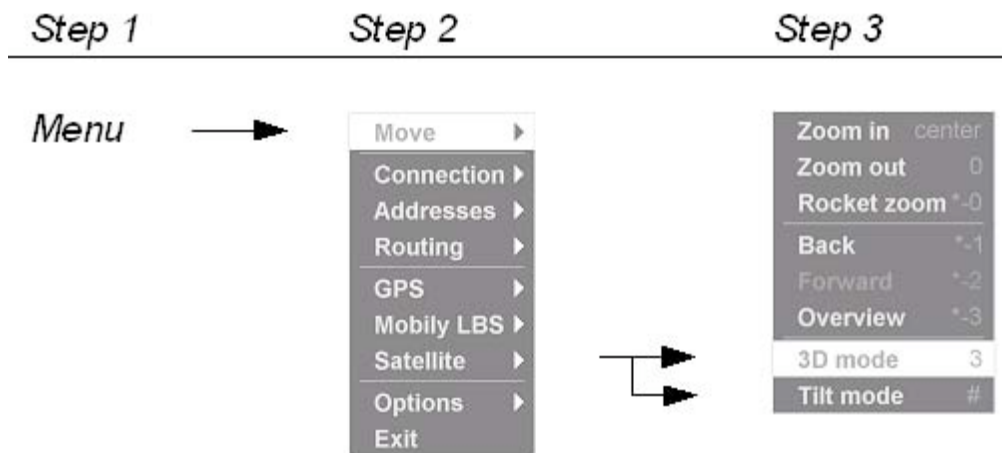
4 3D Map View

Amaken allows switching to a three-dimensional map view. You can tilt the map view as desired.

“Move Menu” => “3D mode” Switches to 3D view.

“Move Menu” => “Tilt mode” Allows you to tilt the map view. Increase the pitch with the up arrow key. Decrease the pitch with the down arrow key.

The 3D mode is enabled automatically when the map view is tilted.



5 Offline Mode

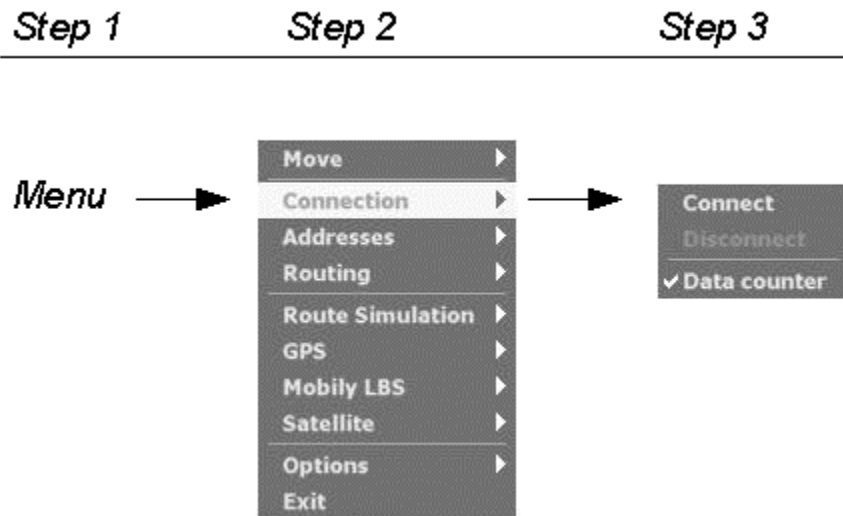
Map data that has been downloaded during a session is stored on the phone. Thus, you will still be able to navigate in the map, even if the client is disconnected from the server (offline mode).

“Connection Menu” => “Connect”

Connects the client to the server.

“Connection Menu” => “Disconnect”

Disconnects the client from the server.



“Connection Menu” => “Data counter”

If enabled, the amount of map data that has been downloaded to the client during the current session is shown in the upper-left corner of the screen.



6 Address Search

Amaken allows you to search for addresses in the region you are browsing. When typing an additional catch phrase in the search field, it is further possible to search for POIs that are located at the given address. The available catch phrases for each POI category are provided in Attachment A.

To search for an address perform the following steps:

1. Select "Menu" => "Addresses" => "Search" (or simply press "1"). A dialog box appears.
2. Write the address to search for in the text box. You can enter full addresses (country, city, street, house number) or partial addresses (e.g. city and street). To look for a POI in the specified map area, enter a catch phrase.
3. Select "Search" to start the search process.



The results of each successful search operation are shown in a list. You can scroll through the list with the down and up arrow keys. Press the cursor button to select a result. Then the map view is zoomed in and centered on the result.



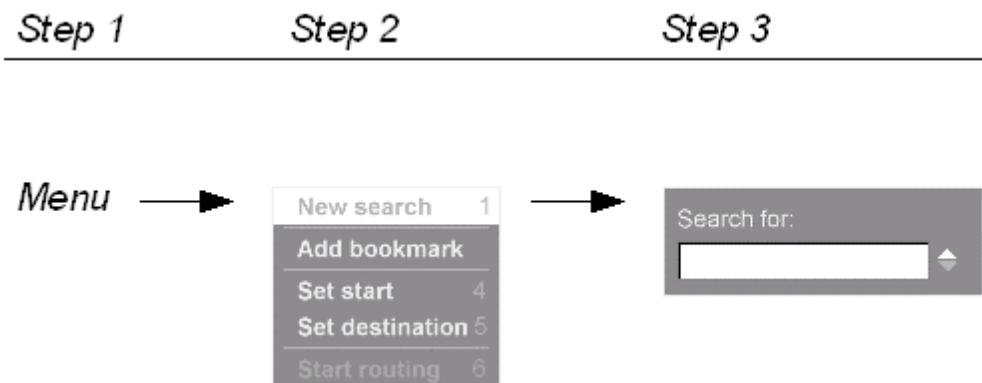
Note: You can bookmark any entry of the result list or use it as start or destination point of your route calculation. Bookmarking and route calculation is described further below.

You can search also for any address in Saudi Arabia using the Saudi postal codes. This could take place using the 4-digit building number and the district name or the 5-digit zip postal code of the required area.

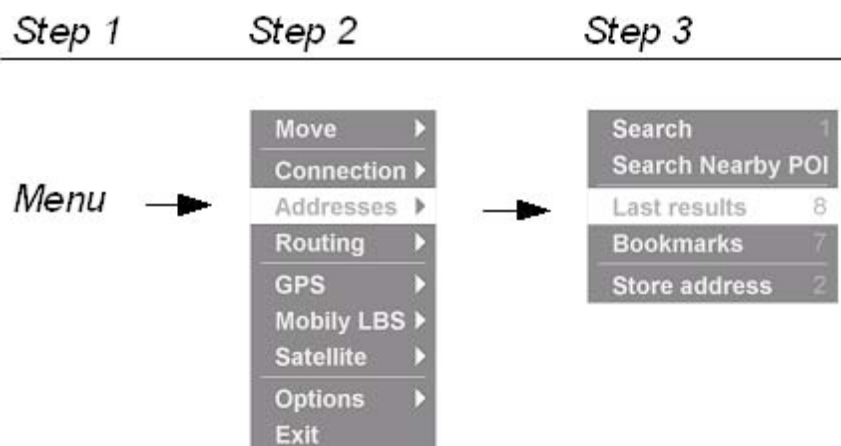
To search for any building in the kingdom, enter the building 4-digit number followed by comma or @ and then the 5-digit postal zip code of the required area. Example: 2121,12345 or 2121@12345

Alternatively, you could enter the building 4-digit number followed by space and then the district name of the required area. Example: 2121 al ulaya

A new search can be performed with "Menu" => "New search" (or press "1").



You can access the result list of the previous address search at any time using "Menu"=>"Addresses"=>"Last results" or by using the shortcut "8".



7 Search Nearby POIs

For the main POI categories *Amaken* provides an option to search for nearby POIs based on the current map view.

The following POI categories are provided:

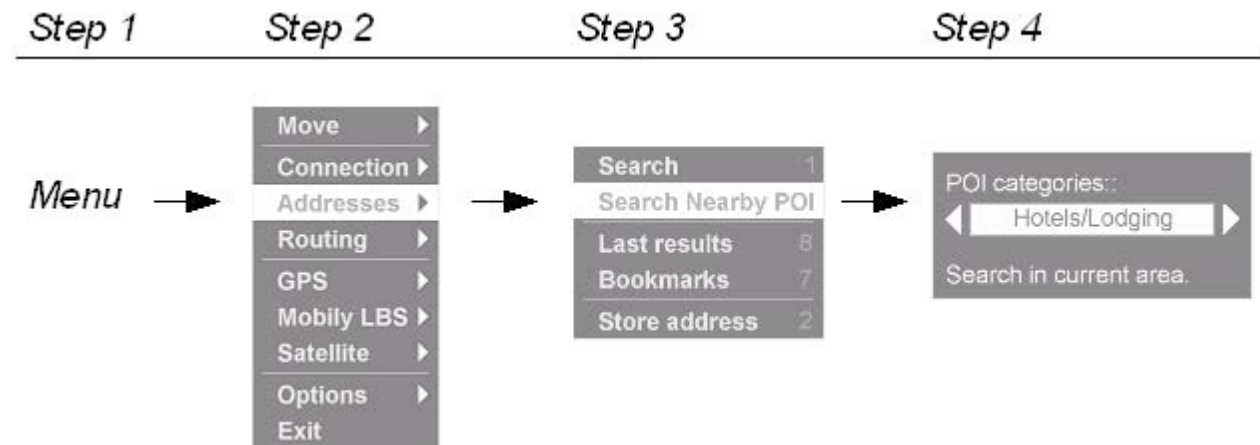
- Hotels/Lodging
- Mobily
- Restaurants and Cafe
- Culture/Sights
- Railway/Transportation
- Bank
- Car Service/Parking
- Business / Commercials
- Tourist Info
- Shopping
- Places of Worship
- Government (building)
- Point of Interest
- Sport/Facilities
- Hospitals/Health
- Bus Station
- Airport
- Post

The search will take place on the current displayed map view/frame to locate the nearest POI to the position you are viewing.

In case you want to get the nearest POI to your physical location, you should first locate your self either through GPS or LBS and then do the "*Search Nearby POI*". GPS and LBS locating options are described further below.

Follow these steps for a POI search:

1. Select "Menu" => "Addresses" => "Search Nearby POI".
2. Choose a *POI Category*, for example "Hotels/Lodging".
3. Select "OK" to start the search process.



The results of each successful search operation are shown in a list. You can scroll through the list with the down and up arrow keys. Press the cursor button to select a result. The currently selected result is shown highlighted in the map.



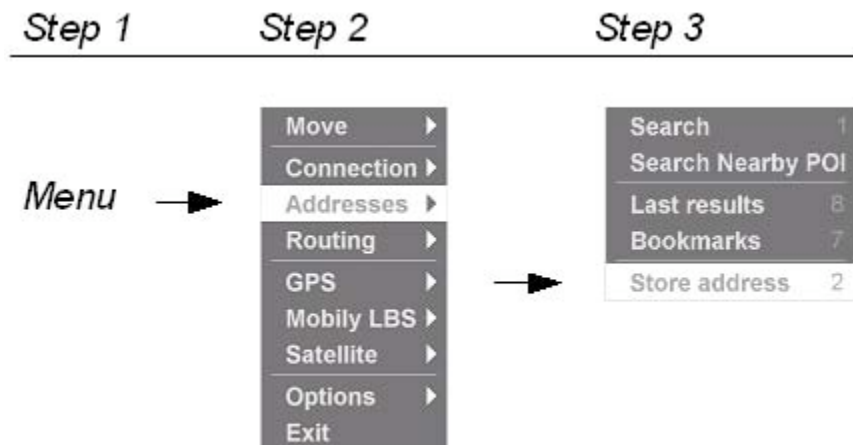
Note: You can bookmark any entry of the result list or use it as start or destination point of your route calculation. Bookmarking and route calculation is described further below.

8 Bookmarks

For quick access to your favorite locations, Amaken allows you to store bookmarks. You can bookmark the current position shown on the map as follows:

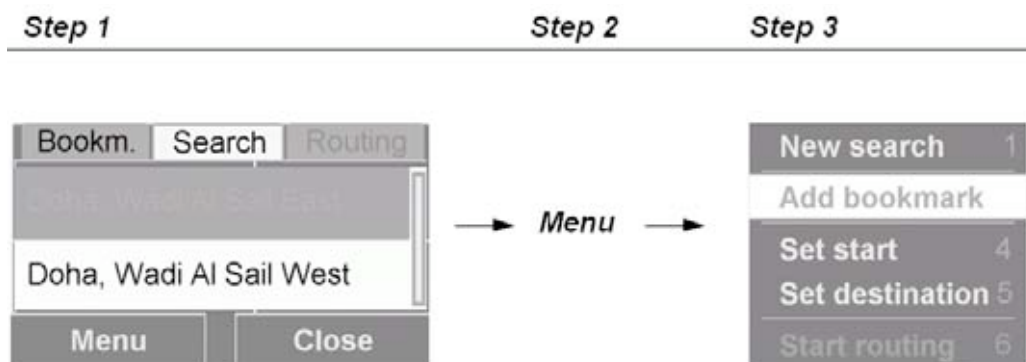
“Menu” => “Addresses” => “Store address” (or press “2”).

A dialog is displayed that allows you to type in a name for the location.



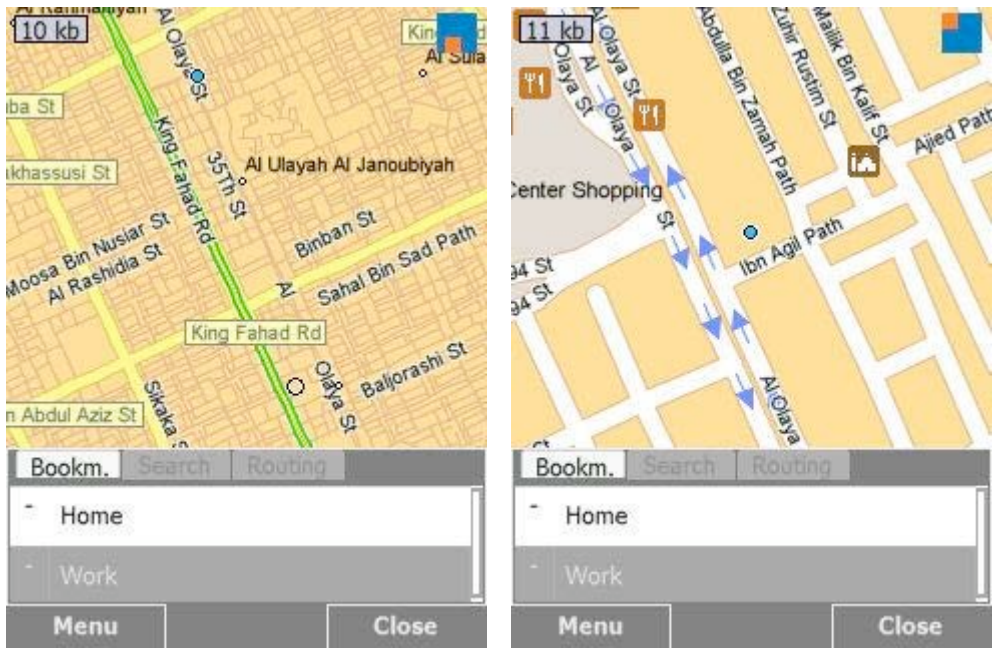
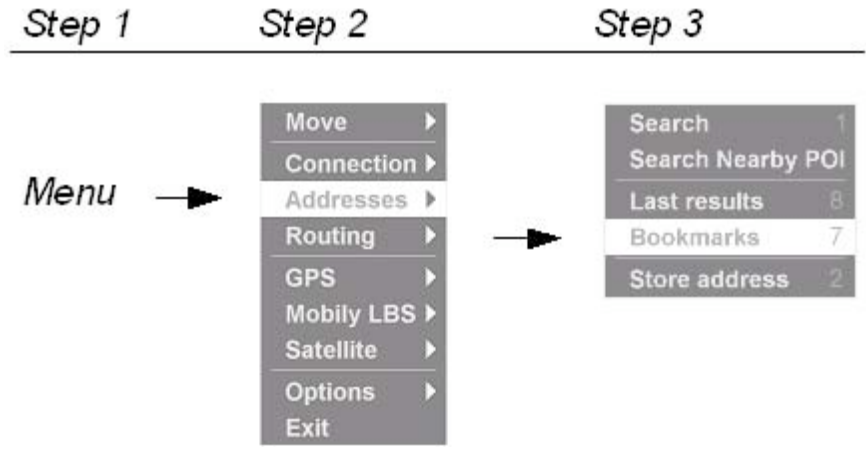
Alternatively, you can bookmark an item of any result list. This option is only available when a result list is shown.

1. Select the result to be bookmarked.
2. Select “Menu” => “Add bookmark” to bookmark the selected item.
3. A dialog is displayed that allows you to type in a name for the location.



Show the list of all your stored locations:

"Menu" => "Addresses" => Bookmarks" (or press key "7") Shows a list of all your stored locations.



You can scroll through the list with the down and up arrow keys. Press the cursor button to select a result. The currently selected result is shown highlighted in the map.

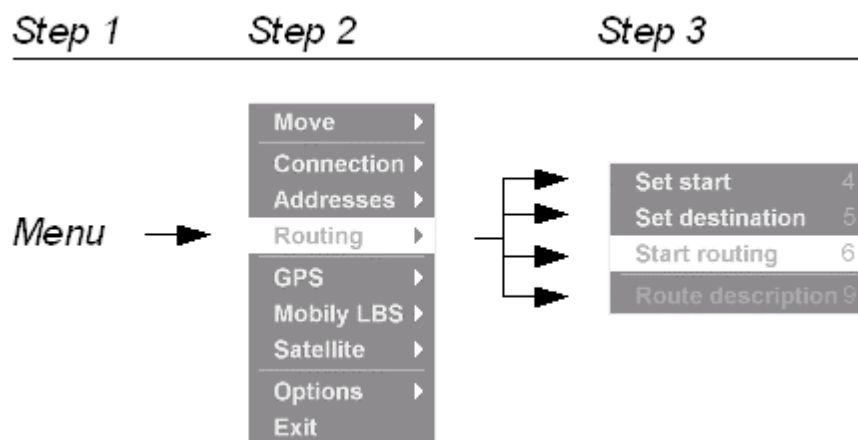
9 Routing

You can calculate routes with *Amaken*. Start and destination of the route can be either set to the current map position or chosen from one of the result lists (e.g. from the bookmarks or search result list).

Amaken shows the route on the map with a blue path and provides a detailed turn-by-turn description.

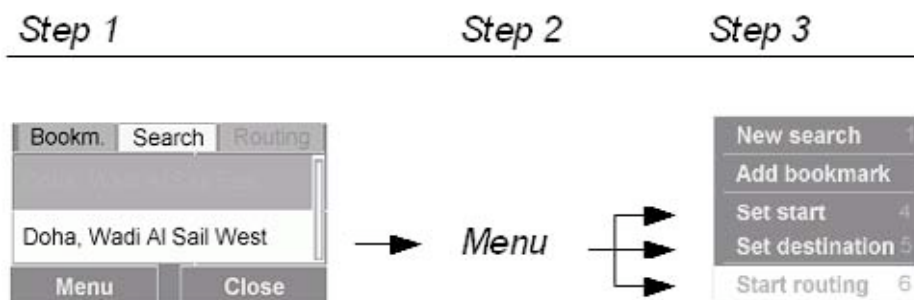
To calculate a route, please perform the following steps:

1. Set start and destination of the route to the current map position:
2. To set the start of your route, position the cursor on the desired location/point on the map and select "Set Start" from the "Routing" menu (or press "4"). A grey pin marks this point.
3. To set the destination, position the cursor on the destination of your route and select "Set Destination" (or press "5"). A purple pin marks this point.
4. Select "Routing" => "Start routing" (or press "6") to start the route calculation.

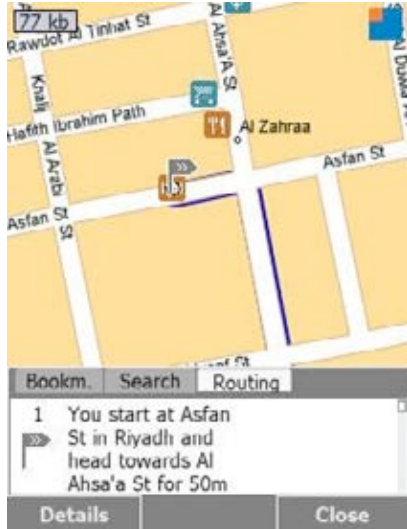


Alternatively, you can set items of a result list as start or destination of a route:

1. Select the start of the route from one of the result lists (e.g. from search results) and select "Menu" => "Set start" (or press "4").
2. Select the destination of the route from one of the result lists and select "Menu" => "Set destination" (or press "5").
3. Select "Menu" => "Start routing" (or press "6") to start the route calculation.



As result the calculated route will be shown on the map as a blue path in combination with a detailed turn-by-turn route description below the map.



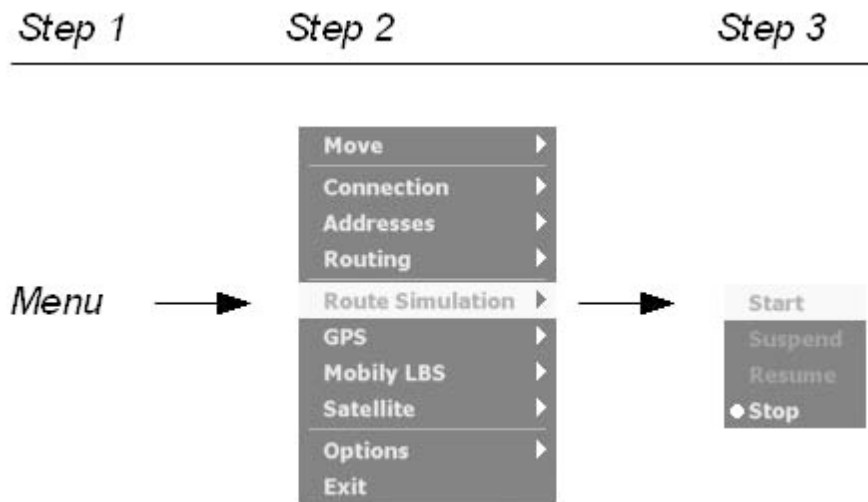
You can scroll through the route description. The map view automatically zooms to the selected route segment. The left column of the route description shows an arrow which indicates the driving direction. The middle column provides a driving instruction, for example “Follow the 25th St for 710m”. The right column contains the length of the traversed route and the assumed time needed to traverse the route.

Note: The description of a route can be recalled by selecting “Routing” => “Route description” (or press key “9”).

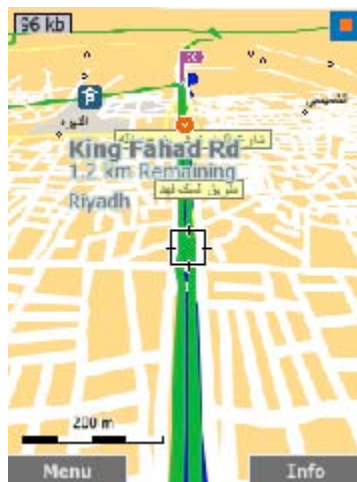
10 Route Simulation

After calculating a route, you can simulate a flight along the route.

- “Route Simulation” => “Start” Starts the route simulation.
- “Route Simulation” => “Stop” Stops the route simulation.
- “Route Simulation” => “Suspend” Stops the route simulation Temporary.
- “Route Simulation” => “Resume” Resume the route simulation again.



After selecting “Start”, a flight simulation along the calculated route is performed:



Note: The 3D mode is enabled automatically with the route simulation.

11 GPS Position Tracking

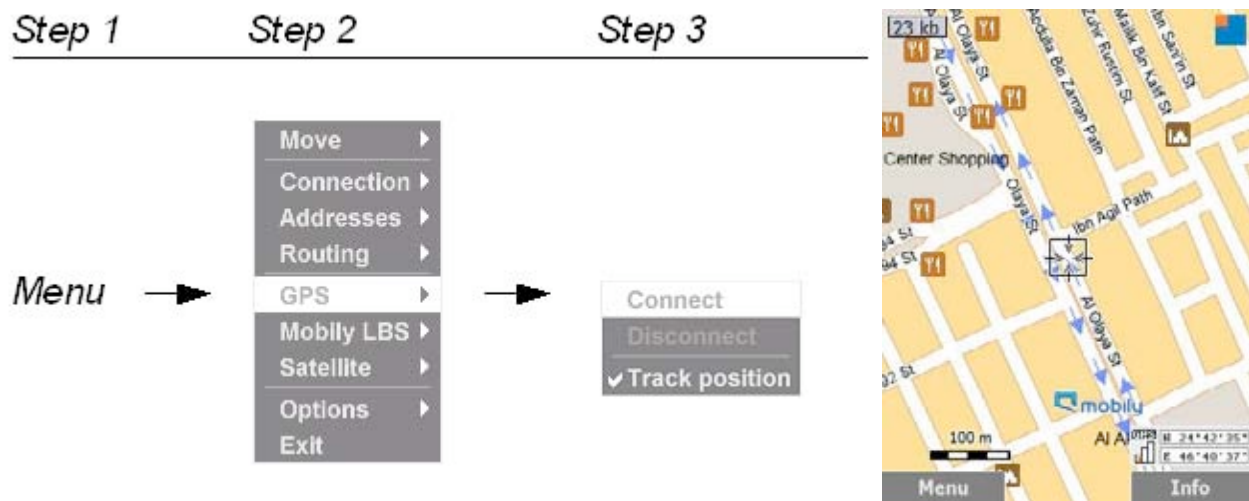
Amaken uses GPS to determine your current position with phones that have GPS capabilities.

Note: If your mobile device does not provide a GPS receiver, you can also connect to an external GPS receiver via Bluetooth.

To track your current position you have to make sure that the GPS device is connected in case of external GPS adaptor (Bluetooth) or activated in case of internal GPS adaptor and then:

“GPS” => “Connect”

After connecting to the GPS your current position is shown as + sign in the map and your position coordinates are shown at the lower right corner of the screen.



Tracking your Position using GPS:

Once you are connected to the GPS, your position will automatically be tracked and the map will automatically pan with your movement.

“GPS” => “Track position” menu item. You can stop the position tracking by un-checking the “Track position” menu item. You are still connected to the GPS and can track your current position again by checking the “Track position” menu item.

“GPS” => “Disconnect” Disconnects from the GPS.

12 Mobily Location Based Services

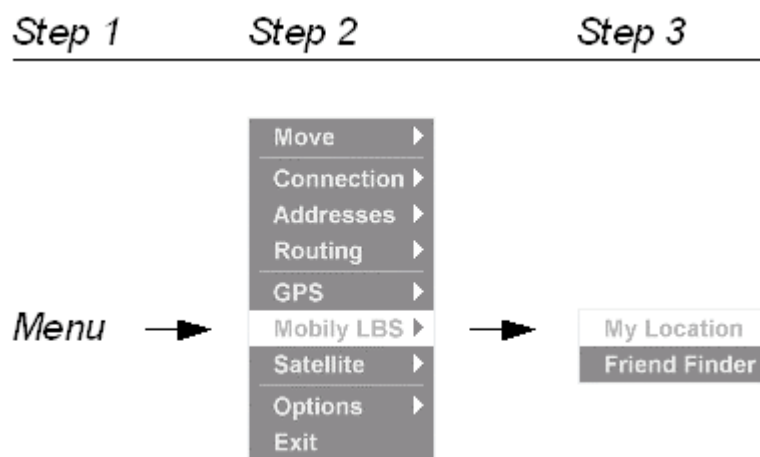
Amaken can still locate you if your mobile device does not support GPS tracking. This could take place with any type of mobiles using mobily network capabilities.

Amaken finds your current position and shows it on the map. You can further find the position of your friends by entering their mobily number and this will be of course after getting their permission.

My Location:

“Mobily LBS” => “My Location”

Shows your current location on the map. Your position can be anywhere within the marked area.



You will be asked to wait to capture your position and then your current position will be shown as follows:



Friend Finder:

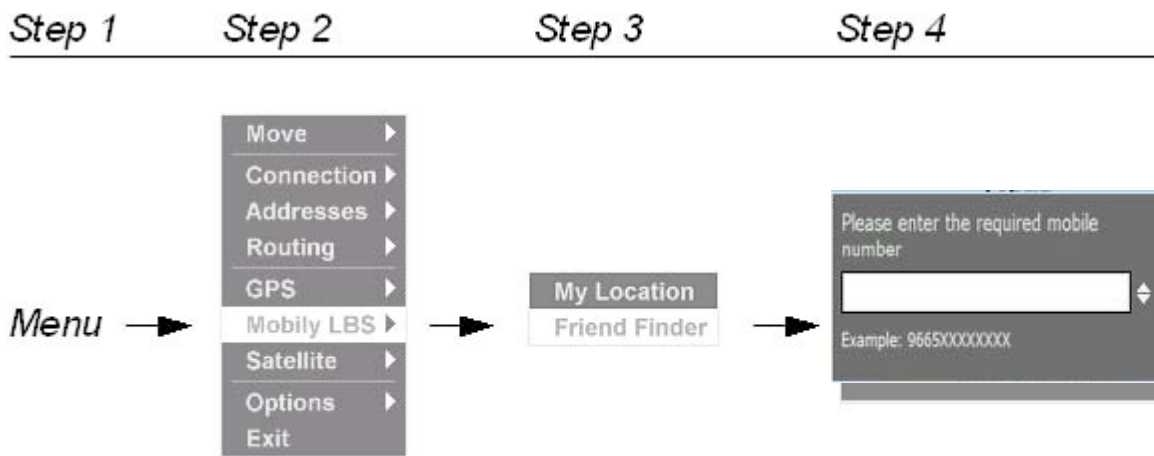
“Mobily LBS” => “Friend Finder”

You are asked to enter the required mobily number of the person you are looking for. You should enter the required number in the following format 9665XXXXXXXX.

You should wait to get the other party permission. Your friend will receive a message asking him to give you the permission to locate him.

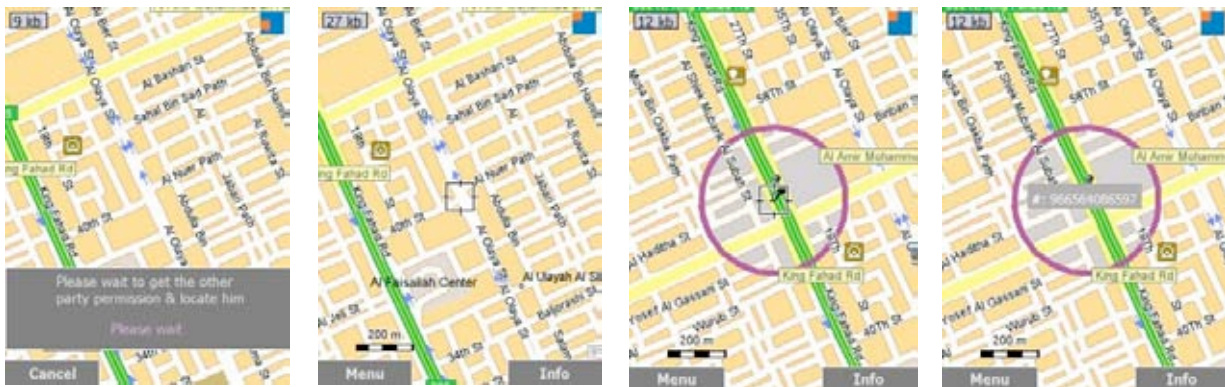
He should answer back within 10 minutes by “Yes”. As result the friend's position is shown on the map.

If he did not reply in 10 minutes or replied with “No”, you will be notified that he has rejected your request.



Your friend position will be shown as follows:

The friend's position can be anywhere within the marked area. You can press info button to view his number.



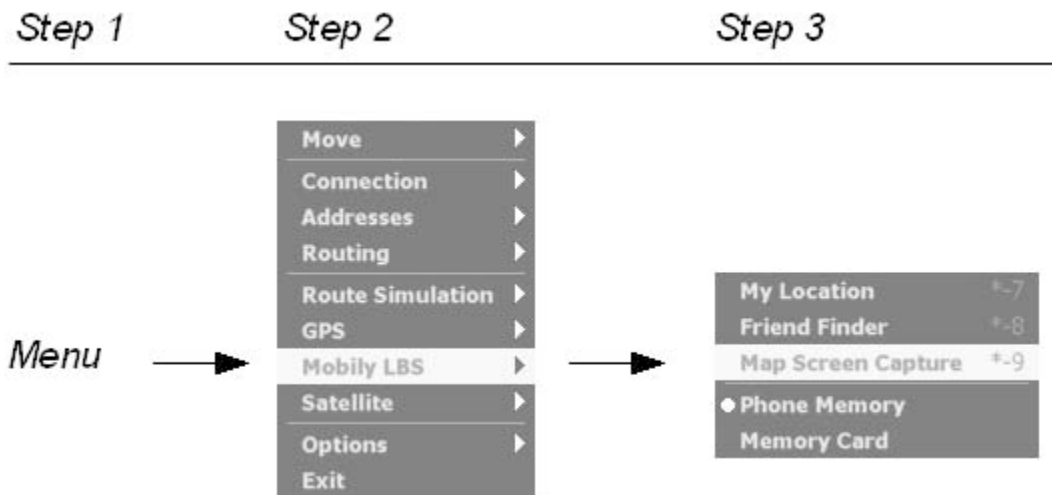
13 Capturing a Map Image

Amaken provides an option to create an image of the currently shown map view. It is possible to choose if the image should be stored in the phone's memory or on a memory card.

You can access the stored image in the directory that is defined as default image directory. The image is stored in the PNG file format. The file name starts with "Amaken", followed by the date and a four digit number. Example: "Amaken0809010001.png".

You could then use this captured image to send it via Bluetooth or MMS to others.

- "Mobily LBS" => "Map Screen Capture" Creates an image of the current map view.
- "Mobily LBS" => "Phone Memory" Stores the map images in the phone's memory.
- "Mobily LBS" => "Memory Card" Stores the map images on a memory card.



A dialog is shown stating that the current map view has been saved as image.

Press "OK" to save the image.



14 Satellite View

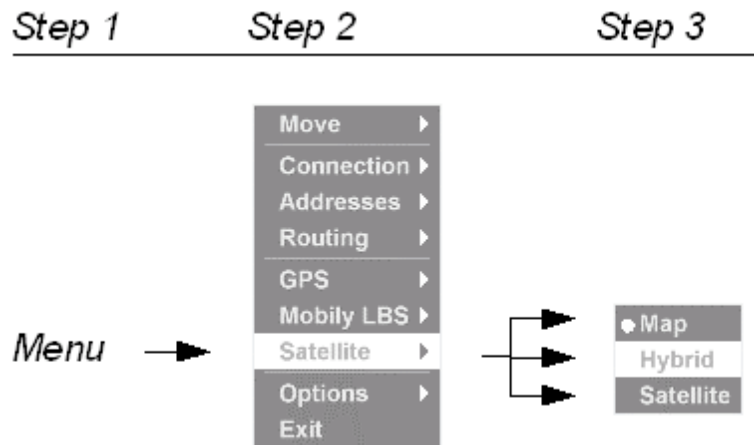
Amaken allows you to show an aerial or high resolution satellite image of the geographical area.

In the hybrid view the streets and cities are drawn on top of the satellite image.

“Satellite” => “Satellite” Switches to the satellite view.

“Satellite” => “Hybrid” Switches to the hybrid view.

“Satellite” => “Map” Switches to the map view.



The following map images show the map view (left), hybrid view (middle), and satellite view (right):

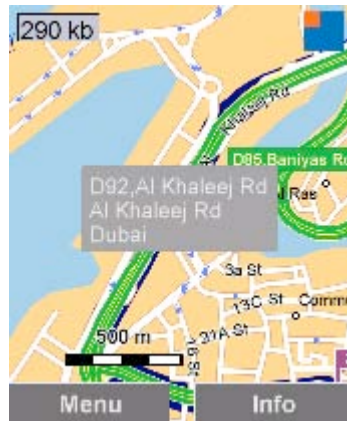


15 Location Information

Amaken provides address information about the location on which the map view is centered.

1. Center the map view on the desired location.
2. Select the “Info” button in the lower right corner of the screen.

The address data is displayed in the screen's center.



You can also get more info about any POI by selecting it and press info button to get the POI name, address and phone (when available).

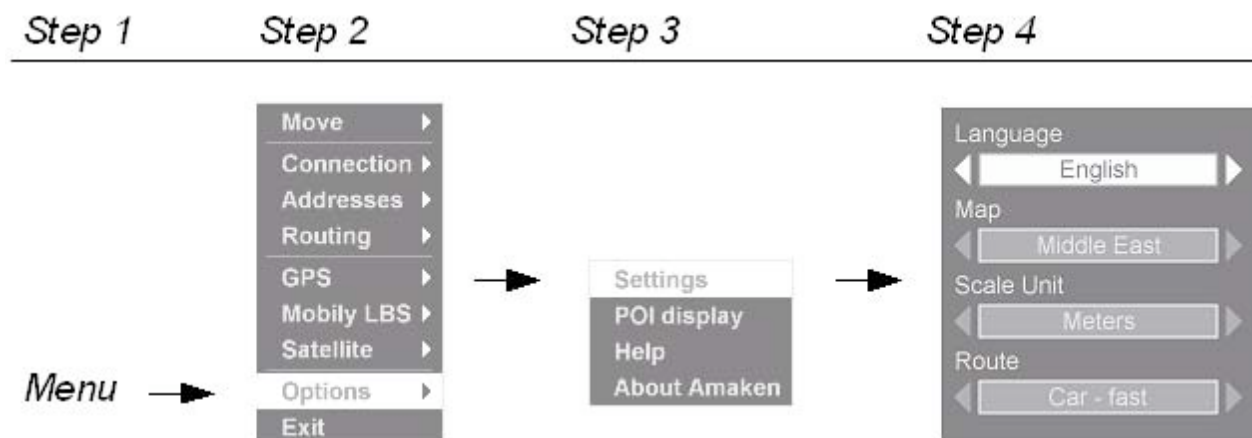


16 Application Settings

Amaken provides multiple options for changing the language, map area, scale unit, routing parameters, and displayed POIs.

“Options” => “Settings” Displays a dialog box that allows you to change the settings.

Note: After changing the settings the *Amaken Client* will ask you to restart the application by pressing “Yes”.



Supported languages:

- English
- Finnish
- French
- German
- Icelandic
- Italian
- Polish
- Portuguese
- Romanian
- Russian
- Swedish
- Turkish

More and more languages will be added continuously.

Supported maps:

- Europe
- North America
- South America
- Middle East
- Middle East (Arabic)
- South Africa
- Asia Pacific

More and more areas will be added continuously.

Supported scale units:

- Meters
- Miles

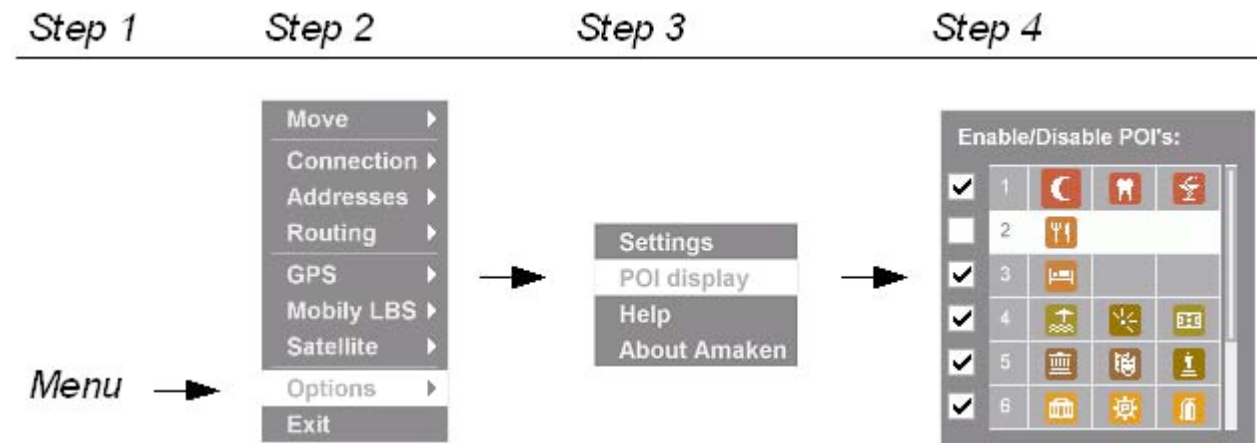
Supported route options:

- Car – short: Calculate the shortest route for cars
- Car – fast: Calculate the fastest route for cars
- Pedestrian: Calculate a route for pedestrians. For example, motorways are not used, and one-way arrows are ignored when choosing this option.





















17 POI Display Options

You can enable or disable the display of certain POIs. By default, all supported POIs are displayed.

“Options” => “POI display” Displays a list of POIs. The complete list of POIs with description is provided on the following page. You can scroll through the list with the cursor. One list item may contain one to three POIs. All currently enabled POIs are marked with a checkmark. You can disable or enable the display of POIs by pushing the cursor button.



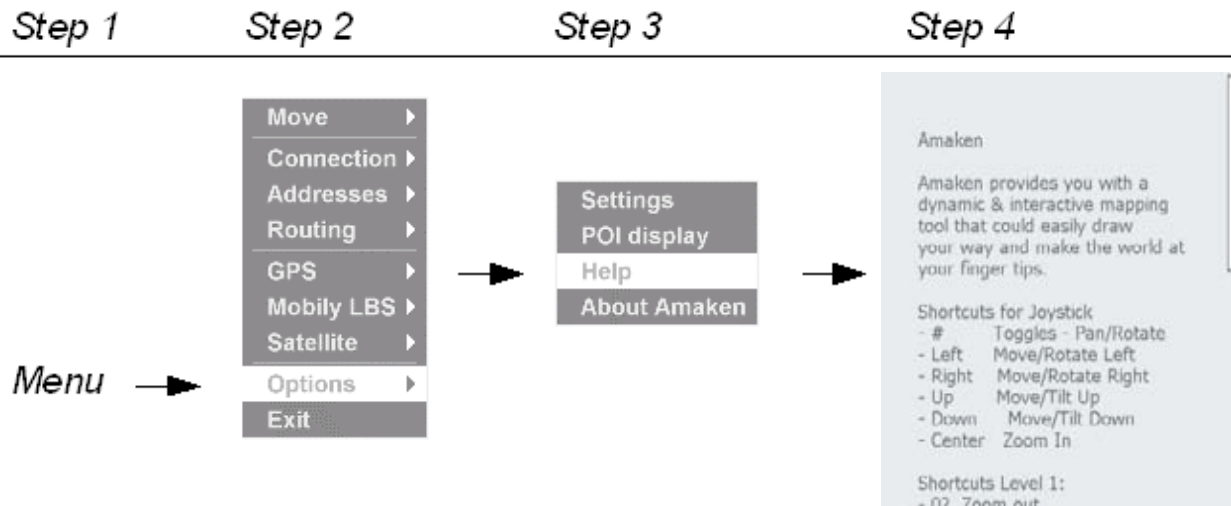
The complete list of POIs is provided here:

Symbol	Description	Symbol	Description	Symbol	Description
	Doctor		Museum		Post
	Dentist		Performing Arts		Shop / Shopping Center
	Pharmacy		Sightseeing		Bank
	Restaurant		City Hall		Railway
	Beach		Police Station		Airport
	Sightseeing / View		Fire Station		Ferry
	Sportstadium		Gas Station		

18 Quick Reference

For your convenience most of the functionality of Amaken can be accessed via shortcuts. The shortcut is listed next to the menu function.

“Options” => “Help” lists all used shortcuts at a glimpse.



“Options” => “About Amaken” provides copyright and version information.



19 Installing Updates

The following steps describe how to receive updates of *Amaken*:

1. If a new version of *Amaken* is available, you will be informed at startup of *Amaken* client with a message: "New version available":



2. Go to www.mobily.com.sa
3. Alternatively, you could call voice self service IVR (1100), access mobily menu on (*1100#) or send SMS with "Download Amaken" to 1100. You will receive a message with the download link.
4. Download the newest version of *Amaken* client.
5. Install *the new Amaken* client on your phone and enjoy it directly.

Attachment A: POI Catch Phrases

The POI catch phrases are key words that can be used in an address search to find POIs within the specified map area.

POI Category	POI Catch Phrases
Rest Area	Highway stop, toilet, restaurant, parking lot
Border Crossing / Border	Border crossing, national border
Park	Green belt, recreation area
Beach	Swimming, sun bathing
Zoo	Animals
Camping	Tents, outing, camping
Leisure / Spare time	Fun, free time
Auto service / Workshop	Oil change, repair, auto repair, auto service, car dealer, service station
Petrol station / Gas station	Filling station, oil, oil change, carwash, auto service, BP, Shell, Texaco, Union 76, AMPM
Car rental	Renting car, national, budget, Alamo, Herts
Car dealer	Auto workshop, new vehicle, used car
Parking lot	Parking structure, parking
Parking house	Park garage, parking structure, parking lots, parking lot
Park & Ride	Public transit, rapid transit railway
Lodging / Motel	Hotel
Restaurant	Meal, Dining out, pizza
Museum	Culture, exhibition, artist, art collection
Cinema	Cinema, film
Performing / Theatre	Play, opera
Nightlife	Going out, club
Exhibition	Gallery
Music concert / Music	Concert, meeting, open air, amphitheater
Tourist information	Info, tourist info
Sightseeing	Monument
Monument	Statue, memorial, monument
View	Prospect, panorama
Church	Cathedral, churches
Sport Stadium / Stadium	Sports stadium, football stadium, ice hockey, football, arena, stages, arenas
Sport Centre / Fitness	Training, Wellness, Fitness club, studio
Bowling Centre / Bowling	Plays, Dart, Entertainment
Swimming pool	Pool, swimming, bathing
Ice Skating	Ice hockey, ice dance, winter sports

Ski Resort / Winter Sports	Ski driving, ski swing, skiing area, aerial ropeway, ski elevator, carriage
Tennis	Tennis plays, tennis training
Water sport / Water sports	Kayaking, Rafting, trip, boating, water skiing, skiing, wak boarding
Golf / Gulf	Playing gulf, gulf club, gulf course, club house, gulf tournament
Hospital	Hospital, physician, operation, emergency, accident, assistance, nurse
Doctor	Stomach pain, nose ear and throat physician, HMO, outpatient clinic, general physician, gynecologist, Allergologe, specialist
Dentist	Tooth ache, braces, teeth whiting
Veterinarian / Vet	Veterinarian surgeon, veterinary practice, animal medicine, small animal, domestic animal
Pharmacy	Prescription, emergency service
Embassy	Consulate, citizen, agency
City Hall	Mayor
Government Building	Government building, administration, government
School	Training, Pre-school, Elementary school, High school, continuation school
University	Professional school
Court house / Court	Law courts, judge, Administrative Court, district court, labor court
Library	Library, book-borrows
Police	Emergency call, 911, emergency, assault, assistance
Post / Post Office	Stamp, postal bank
Winery	Sparkling wine, wine celar, winegrower, wine tasting
Shopping Centre / Mall	Shopping center, Mall, Shopping, purchase possibility, purchase opportunity, city center, city centre
Shop / Business	Shop, purchase possibility, purchase opportunity
Bank	ATM machine, safey deposit, safe-deposit box, savings and loan
ATM / ATM Machine	ATM machine
Company	Enterprise
Airport	Airfield, arrival, takeoff, terminal, air traffic
Ferry	Passage, main ferry
Harbour	Port, container port
Railway	Train station, main station, east station, south station, north station, west station, central station
Airport Arrival / Arrival	Arrival at the airport, arrival of flight, Arrival
Airport Departure / Takeoff	Airport takeoffs, Departure
Sport Airport	Sail airfield, private airport
Marina	Sailing boat, motorboat, port
Subway	Underground, Metro
Commuter rail / Commuter train	Commuter station
Bus station	Central bus station, bus, touring bus
Country Capital (>1000000) / Capital	Seat of government, Federal Capital

Town / City	Village, township
Military Airfield	Military airport
Racetrack	Motorcycle racing, racing course, concourse
Mobile Home Area / Mobile Home Park	Overnight accommodation place, camping, camp site, camping grounds
Mountain	Summit, mountain range
Art	Culture, exhibition, museum
Fire Station	Fire-fighter, 911
Prison	Penitentiary, juvenile hall
Cemetery	
Convention Center	Trade show, music, concert, meeting
Nursing Home	Retirement home, elderly home, assisted living
Land Use	Agriculture
Car Rental Parking / Parking Lot	
Mosque	
Synagoge / Synagogue	
Car Loading Facility / facility	Building
Town or District / town	Township, District
City District	Downtown, city center